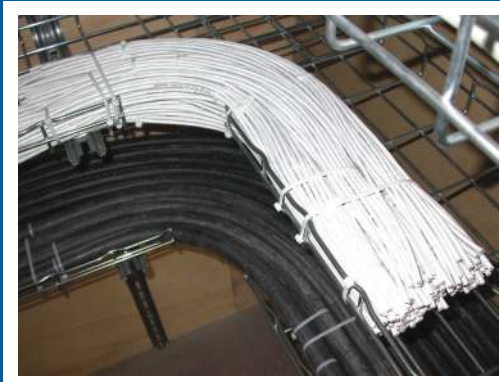


# TECHNOSYS

Aspiring For Inspiration

## COMPANY PROFILE



Cabling



Electrical Substation & Instrumentation



Electrical Maintenance

**Technosys Engineers and Consultants (Chennai) Pvt.Ltd**

# C o n t e n t s

## INTRODUCTION

### CABLING

Scope of services offered

Site organization chart for typical project

List of tools and equipment

List of contracts executed

Photographs of contracts executed

### ELECTRICAL SUBSTATION & INSTRUMENTATION

Scope of services offered

Site organization chart for typical project

List of tools and equipment

List of contracts executed

Photographs of contracts executed

# INTRODUCTION

Technosys Engineers and Consultants (Chennai) Pvt. Ltd is an Engineering organization extending Engineering services in the field of Power and Energy, Power System studies, Erection, Supervision, Testing & Commissioning of Electrics and Management services etc.

We are also having setup at Dubai in the name of De Technosys Electromechanical LLC which is involved in the same kind of services.

Technosys Engineers And Consultants (Chennai) Pvt. Ltd business unit was established in 2000 in India with the objective of addressing the various market segments of the power sector. According to the needs of the market, TECHNOSYS comprises of the following divisions, which function as independent business entities.

## **Engineering & Contracting:**

|   |       |
|---|-------|
| Technosys Engineers and Consultants (Chennai) Pvt.Ltd | India |
| De Technosys Electromechanical LLC                    | UAE   |

## **Manufacturing:**

|                 |       |
|-----------------|-------|
| Techno products | India |
|-----------------|-------|

## **Overseas Recruitment:**

|   |       |
|---|-------|
| Technosys Engineers and Consultants (Chennai) Pvt.Ltd | India |
|---|-------|

## **Commissioning Services:**

|           |             |
|-----------|-------------|
| Technosys | India & UAE |
|-----------|-------------|

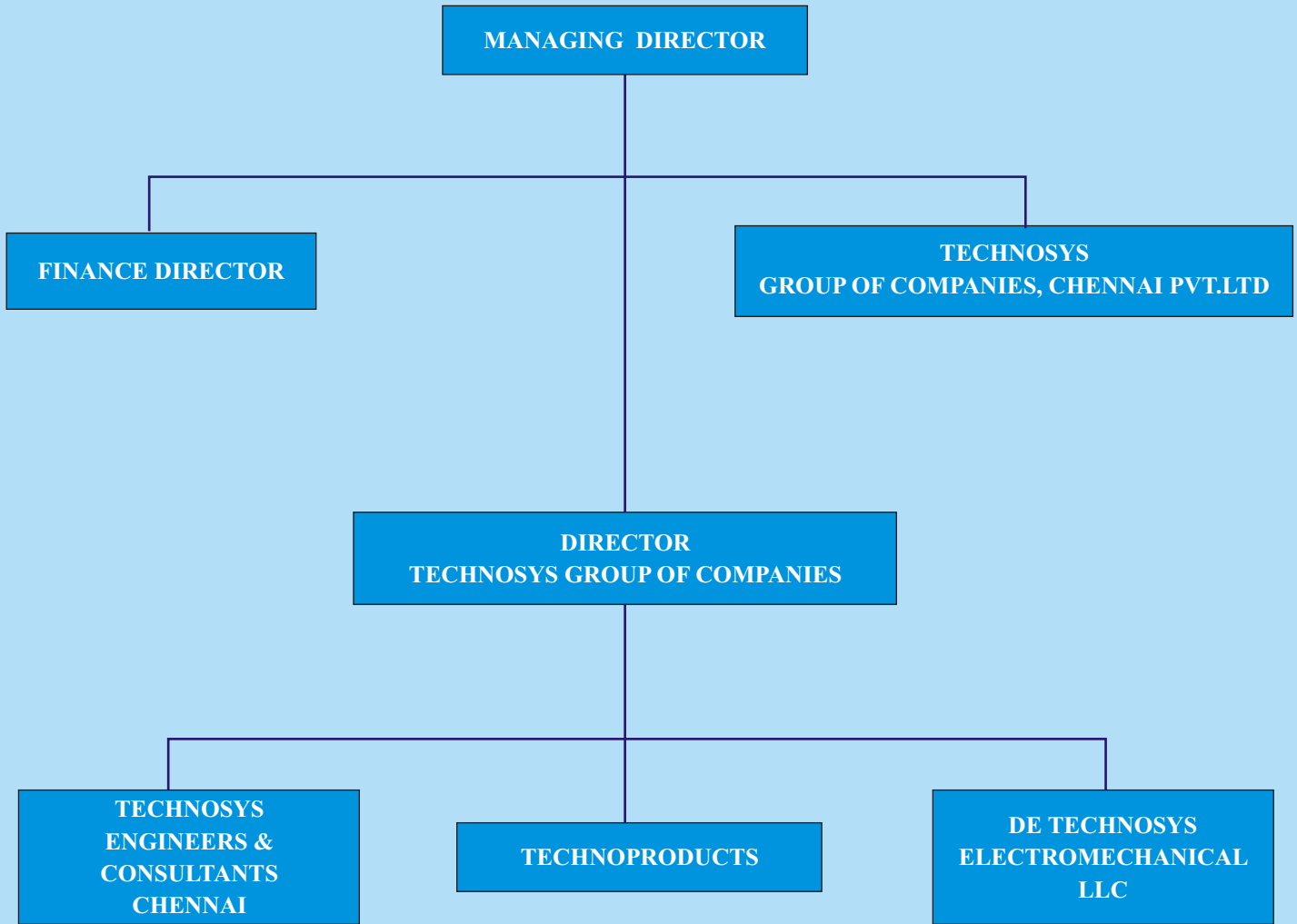
Though the presentation of this brochure shall primarily be confined to business pertaining to the engineering and contract division, a brief outlook of our commissioning services has been included at the end of the document.

The engineering & contracting division addresses power projects of various scopes right up to EPCC (Engineering, Procurement, Construction and Commissioning) contracts of up to 400 kV. Our Team has vast experience in Erection, HV substations up to 400 kV, HV cabling up to 132 kV, tunnel lighting works, Instrumentation works and industrial electrification projects.

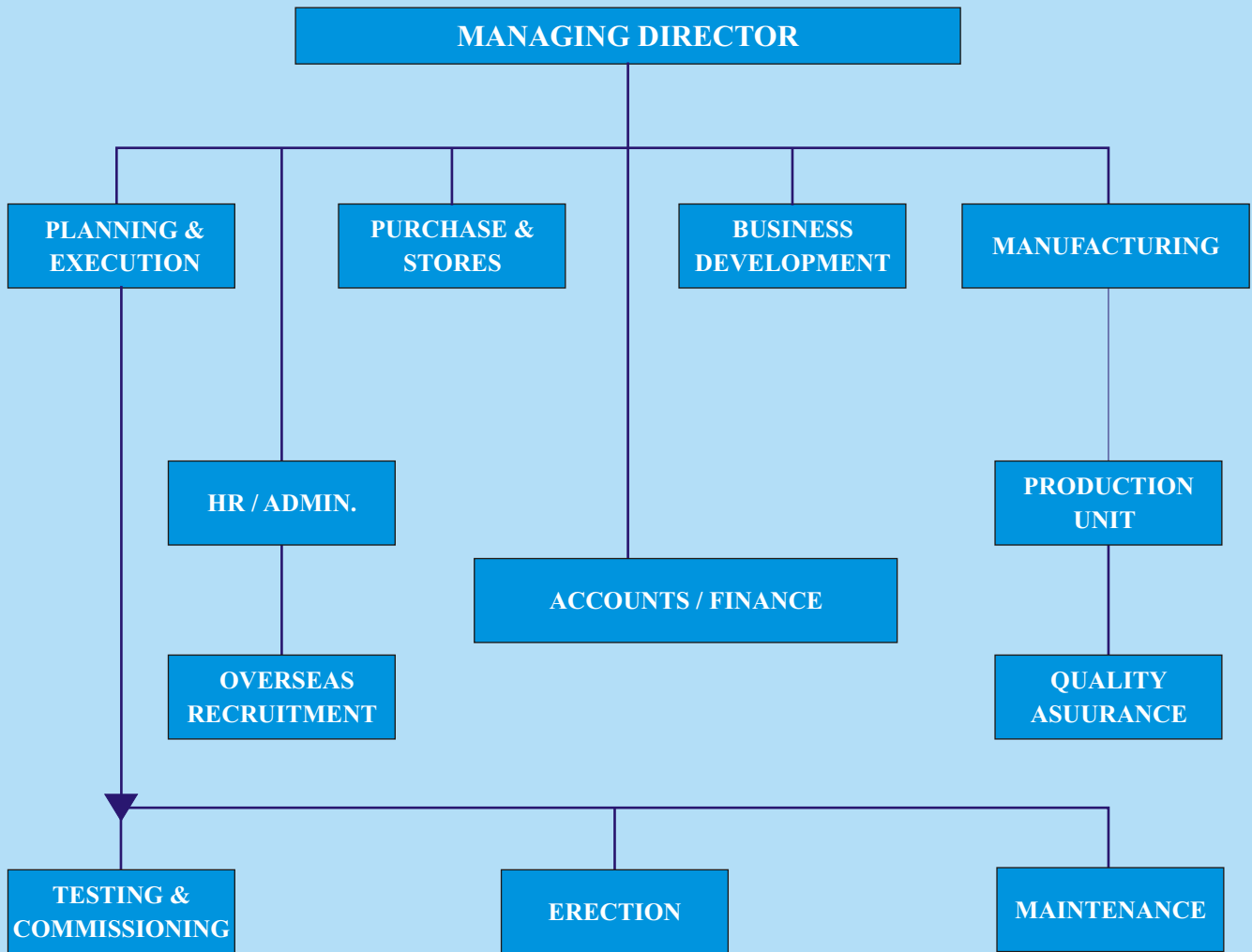
All TECHNOSYS companies have an association agreement between themselves on the joint utilization of all resources and financial assets. Hence, Technosys Engineers and Consultants (Chennai) Pvt.Ltd's capital assets and business skills are combined with specific electric power engineering know-how concentrated within the Technosys companies.

Such organization has proved effective and reliable, being partner to major authorities, consultants and first class International companies within INDIA and other Middle East Markets.

# CORPORATE CHART



# COMPANY ORGANISATION CHART



# SCOPE OF SERVICES OFFERED

**We can offer the following services on high voltage / medium voltage / low voltage cabling installation work all in accordance to Tender Technical Specifications , International / Local Authority Standards and Clients / Consultants requirements:**

- ❖ Collection of maps in required scale form Client / Authority with help and support of Main Contractor. Drafting of cable route in approved corridors on maps as initial preliminary design. Submittal of preliminary design of approved corridors for collection of No Objection Certificates (NOC) to various departments of Authorities.
- ❖ Survey of cable corridor and its marking. Preparation and submittal of cable route workshop drawings for approval. Taking of soil samples for TR testing in approved laboratory and submission of test results.
- ❖ Co - ordination in between Manufacturer and client in all stages of approval procedure of cable circuits ampacity calculations, manufacturer's drawings submission as well as all required technical clarifications.
- ❖ Cable route pegging, identifying of crossing or parallel services , excavation of trial pits, marking of trench excavation lines and installing of traffic warning tapes, signs, lights etc., in accordance to traffic police or other authorities requirement.
- ❖ Excavation of cable trench, construction of road crossings (open cut, thrust or directional boring). Compaction of cable trench bed, taking of samples for testing of compaction degree in approved laboratory. Collection and submission of test results.
- ❖ Optionally if applied: design, supervision of casting at works, supply to site of RCC troughs with covers and their installation in prepared cable trench in accordance to client standards.
- ❖ Selection of backfill sand (available locally) having as sufficient as possible thermal characteristics, delivery to site ( from approved municipality location within concern district), backfilling and compacting it.
- ❖ Cables transportation from main contractors store to site, including loading at store and offloading at site, laying of 132kV,33kV,pilot/FO cables, dressing, trefoiling, delivery and installation of warning tape or concrete protection tiles (where required).

**Fabrication of Cable Trays**



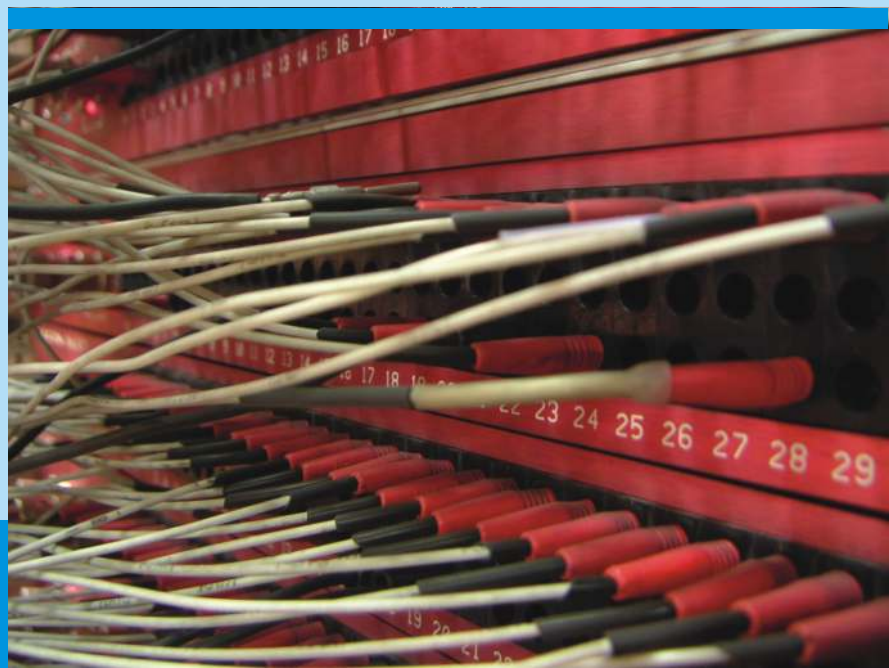


# CABLING



## SCOPE OF SERVICES OFFERED

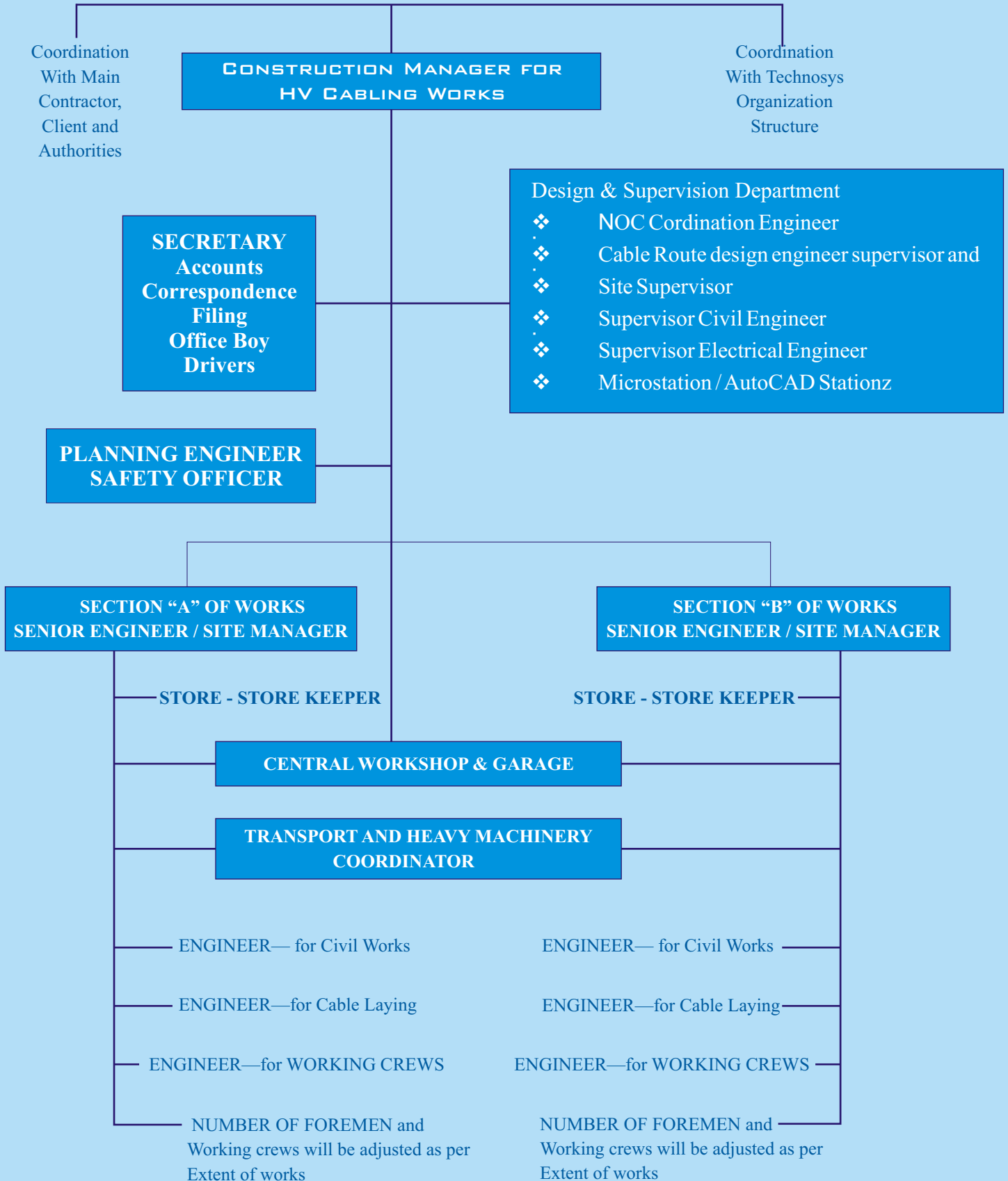
- ❖ For 132kV cables jointing works: Preparation of joint bays for specialized jointer works including installation of air-conditioned jointing chamber at site complete with electricity supply (in accordance to cable manufactures jointers requirements), provision of skilled cable jointers and helpers per joint bay to assist to manufacturers specialized jointers. For 33kV, 11kV or LV jointing works joint bay location will be prepared as per current standards and practice.
- ❖ Performing of cable outer sheath integrity test as per standards and requirements.
- ❖ Backfilling of cable trench as per standards, reinstatement of soil, asphalt or interlock tiles surface. Bentonite filling of installed ducts on road crossing. Dumping of surplus material to Municipality's approved location.
- ❖ Obtaining any required road deviation or approach to facilities, during execution of works, as per Municipality and Traffic police standards.
- ❖ Installation of Cables inside substations including cable trays, support structures for other circuits crossing and termination supports.
- ❖ For cables of voltage level 33kV and lower, complete operations of pre-jointing tests, jointing, termination, high voltage tests, (and if required) circuit positive, negative and zero sequence impedance measurements with issuing of verified test protocols. All jointing and testing works are carried out with approved and calibrated tools and instruments as per applied standards and requirements.
- ❖ Delivery and Installation (if required) of earthing materials for cable armour bonding on joint bay locations or inside substations.
- ❖ Route markers design, approval, delivery and installation.
- ❖ Preparation of marked up and as built drawings of cable routes and their submittal to main contractor/client.





# SITE ORGANIZATION CHART

Typical, for assumed project having 16.6km of cable route,100kM of 132kV,XLPE,1Cx630 sq.mm (2 cables per phase,240MVA) Circuit in 2m wide RCC trough,Equipment,Tools,Transportation,Heavy Machinery and Manpower will be allocated accordingly.



# LIST OF TOOLS AND EQUIPMENT

| Sl No.   | Description   | Remarks   | Comment   |
|----------|---|---|---|
| <b>A</b> | <b>CABLE PULLING TOOLS</b>  |   |   |
| 1        | 5 Ton pulling force hydraulic winch   | 1 No  | Will be adjusted to the size of works and agreed period of completion of works. |
| 2        | Heavy duty 20 ton hydraulic cable drum trailer  | 1 No  |   |
| 3        | Heavy duty 20 ton (each side) cable drum stand and jacks  | 1 sets  |   |
| 4        | 7 ton hydraulic cable drum trailer  | 1 No  |   |
| 5        | 4 – 7 tons cable stand and jacks  | 1 sets  |   |
| 6        | Heavy duty cable rollers  | 100 Nos   |   |
| 7        | Light duty cable rollers  | 50 Nos  |   |
| 8        | Corner rollers  | 10 Nos  |   |
| 9        | Bell mouth for cable duct entries   | 10 Nos  |   |
| 10       | 1m to 3m long cable draw-of rollers   | 10 Nos  |   |
| 11       | Conduit rope for pulling through ducts  | 1 set   |   |
| 12       | Cable stockings   | Various sizes available   |   |
| 13       | Miscellaneous accessories and tools for cable pulling works   | 1 set   |   |
| 14       | Excavators, JCB, Shovels, heavy duty / light duty, duty cranes & trailers and any other light or heavy machinery equipment. | Any required number can be engaged / hired  |   |
| <b>B</b> | <b>MANPOWER</b>   |   |   |
|          |   | Manpower will be allocated for particular project as per completion chart and specific requirements of route.   |   |
| <b>C</b> | <b>OTHER COMPANIES SERVICES DURING EXECUTION OF WORKS</b>   |   |   |
|          |   | Laboratory for measuring Soil parameters, road crossings (thrust or directional boring), surface reinstatement, RCC troughs, concrete tiles ,route markers, warning tapes,UPVC ducts, ready mix concrete, transporters and heavy equipment hiring companies to carry out their part of works are certified and approved by authorities. |   |

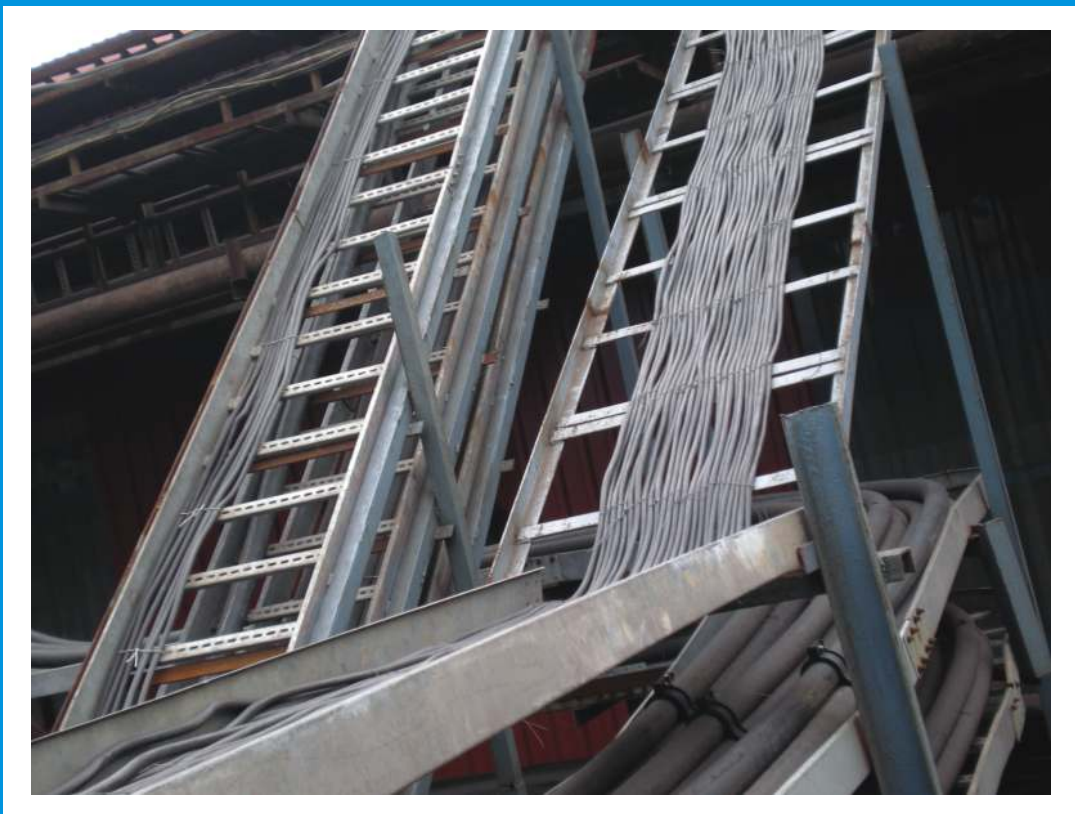
# LIST OF CONTRACTS EXECUTED

| SL. No | CLIENT NAME                | SCOPE OF WORK                                  | ROLE IN PROJECT | YEAR OF COMPLETION |
|--------|----------------------------|--|-----------------|--------------------|
| 1      | Jindal Steel & Power Ltd., | Fabrication & Erection of CableTrays           | Sub Contractor  | 2008               |
| 2      | Jindal Steel & Power Ltd., | Cable Trench, Cleaning & Mud Disposal          | Sub Contractor  | 2007               |
| 3      | Jindal Steel & Power Ltd., | Cable Laying, Structural work at PP3 Electrics | Sub Contractor  | 2007               |
| 4      | Jindal Steel & Power Ltd., | General Electrical Work                        | Sub Contractor  | 2007               |
| 5      | Jindal Steel & Power Ltd., | General Electrical Work                        | Sub Contractor  | 2007               |
| 6      | Jindal Steel & Power Ltd., | Cable erection Work at Water Treatment Plant   | Sub Contractor  | 2007               |

## PHOTOS OF CONTRACTS EXECUTED



Fabrication and erection of cable Trays and laying of cables at JSPL Raigarh Contract No.478001842



General Electrical Works at JSPL Raigarh Contract No.4778000877

# PHOTOS OF CONTRACTS EXECUTED



**Cable Laying work at PP3 Electrical at JSPL Raigarh Contract No.4978000325**



**Cable Trench, Cleaning & Mud Disposal at JSPL Raigarh Contract No.4878000356**



**ELECTRICAL SUBSTATION & INSTRUMENTATION**



# SCOPE OF SERVICES OFFERED

We offer a comprehensive range of services relevant to all stages of HV substations projects including design, supply, erection, testing, commissioning, issuing of O&M manuals and maintenance during the guarantee period.

Our services are tailored to suite requirements of each particular client or main contractor in accordance with particular tender specifications, international standards and good engineering practices.

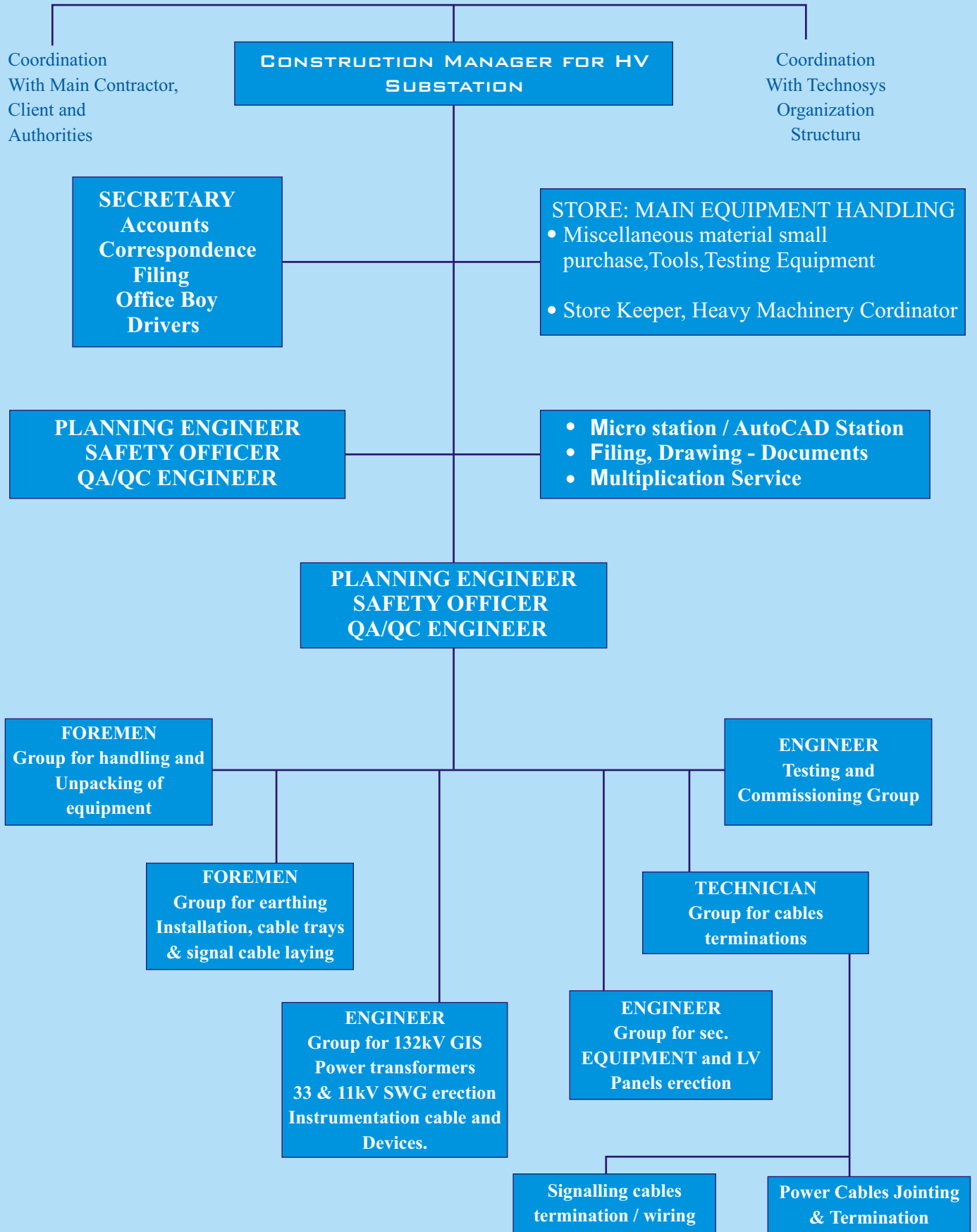
As a subcontractor, our services range from complete project management including erection, testing and commissioning of HV substations, to only ETC under management of the main contractor. Should detailed design of substations or power system analyses be required, we can offer detailed information on specialized companies as part of our services package **Our substation department currently employ over 8 permanent HV substation specialists including experienced engineers, supervisors and technicians.**



**LT Panels**

# SITE ORGANIZATION CHART

Typical, for assumed project having 132/33kV (or) 11kV Substation 2x75 MVA Equipment, Tools, Transportation, Heavy Machinery and Manpower will be allocated accordingly.





# LIST OF TOOLS

| Sl. No. | Description   | Qty |
|---------|---|-----|
| 1       | Hammer 5Kg  | 25  |
| 2       | Hammer 10Kg   | 10  |
| 3       | Power Tool10T   | 5   |
| 4       | Crow bar cum nail puller                                    | 5   |
| 5       | Hole Saw Cutter   | 10  |
| 6       | Pipe wrench   | 10  |
| 7       | Monkey Plier  | 10  |
| 8       | Sprit level   | 5   |
| 9       | Wood Cutting saw  | 10  |
| 10      | Tommy bar   | 5   |
| 11      | Scaffolds wheels  | 5   |
| 12      | Torque wrench   | 10  |
| 13      | Double end Spanner set<br>6mm – 32mm                        | 6   |
| 14      | Box Spanner<br>Set -6mm – 32mm                              | 15  |
| 15      | Electric Drilling<br>Machine up to 16mm                     | 6   |
| 16      | Electric Jigsaw   | 10  |
| 17      | Cutting Machine   | 6   |
| 18      | Grinding Machine  | 6   |
| 19      | 30M Tape  | 5   |
| 20      | Punch & die set<br>dia 8- 10-12-14                          | 10  |
| 21      | Soldering Iron  | 10  |
| 22      | Electric heat gun for<br>shrink type terminal<br>insulation | 6   |
| 23      | Hand crimping tool  | 6   |

# LIST OF TESTING EQUIPMENT

| Sl. No | Material Name  | Serial. No   | Rating                               | Make                         | Mat. No                              |
|--------|--|--|--------------------------------------|------------------------------|--------------------------------------|
| 1      | H.V Test Kit (Control Unit)<br>H.V Test Kit (Discharge Rod)<br>H.V Test Kit (Transformer Unit)<br>H.V Test Kit (Rectifier box) | Ntpl/05/00-01<br>Ntpl/05/00-01<br>Ntpl/05/00-01<br>Ntpl/05/00-01 | 0-30KV<br>0-30KV<br>0-30KV<br>0-30KV | Ntpl<br>Ntpl<br>Ntpl<br>Ntpl | Mat-44<br>Mat-47<br>Mat-45<br>mat-46 |
| 2      | Digital Frequency/Voltage Generator  | 15905  | 20-100 HZ                            | Anantha jyothi               | Mat-124                              |
| 3      | Clamp meter - Digital  | T-05451001   | 1000A                                | motwane                      |                                      |
| 4      | Insulation Tester - Analog   | 24353  | 2500V                                | Cie                          | Mat-182                              |
| 5      | Phase auto transformer   | D/01/06  | 2 A                                  | Techno                       | Mat-177                              |
| 6      | Clamp meter - Digital  | 1477086  | 2000A                                | kyoritsu                     |                                      |
| 7      | Energy meter Calibration kit   | EMCK/00-01   | 0-5A                                 | Techno                       | Mat-98                               |
| 8      | Energy Meter Calibration kit   | EMCK/01/00-17  | 0-5A                                 | Techno                       | Mat-52                               |
| 9      | Extn-Cum transformer test kit  | TS/Ext/T/00-01   | 415V                                 | Techno                       | Mat-55                               |
| 10     | H.V.Probe  |  | 40 Kv Ac/Dc                          | motwane                      | Mat-144                              |
| 11     | Insulation Tester - Digital<br>(Battery Operated)  | T-08190805   | 2000V                                | Motwane                      | Mat-171                              |
| 12     | Loading transformer  | RT/01/00-19  | 200A                                 | Techno                       | Mat-175                              |
| 13     | Single Phase Auto transformer  | 905/D100742/8  | 15A                                  | Ae                           |                                      |
| 14     | Single phase auto transformer  | D/02/06  | 28A                                  | Techno                       | Mat-178                              |
| 15     | Tacho mete   | 206838   |                                      | mastech                      | Mat-59                               |
| 16     | Thermo meter   | 207485   |                                      | mastech                      | mat-64                               |
| 17     | Insulation Tester - Analog   | 18157  | 1000V<br>0.0001-                     | CIE                          | Mat-05<br>Mat                        |
| 18     | 3-Pole Time interval meter   | 3PTIM/00-02  | 9999Sec                              | Techno                       | Mat-166                              |
| 19     | Clamp meter - Digital  | T-08920202   | 1000A                                | Motwane                      | Mat-22                               |
| 20     | Clamp meter - Digital  | T-274705   | 1000A                                | motwane                      | Mat-136                              |
| 21     | Insulation Tester - Analog   | 29651  | 1000V                                | Cie                          | Mat-72                               |
| 22     | Insulation Tester - Analog   | 29564  | 5000V                                | Cie                          | Mat-133                              |
| 23     | Leakage tester   | F-86631  | 2,20,200                             | Lutron                       | Mat-141                              |
| 24     | Loading transformer  | RT/01/00-20  | 200A                                 | Techno                       | mat-76                               |
| 25     | Loading transformer  | Rt/01/00-18  | 200A                                 | Techno                       | Mat-49                               |

# LIST OF TESTING EQUIPMENT

| Sl. No | Material Name                          | Serial. No                       | Rating      | Make    | Mat. No |
|--------|--|----------------------------------|-------------|---------|---------|
| 26     | Loading Transformer                    | TS/362/Lt                        | 2000A       | AE      | Mat-27  |
| 27     | Micro ohms meter - Digital             | 20137                            | 0-1999OHM   | Agronic | Mat-25  |
| 28     | Millivolt Drop test Kit - Digital      | TP/10/00/01                      | 75Mv/160a   | Techno  | Mat-13  |
| 29     | Multi meter - Digital                  | T-152906                         | MULT        | Motwane | Mat-154 |
| 30     | Multi meter - Digital                  | 063845                           | MULTI       | Rishabh | Mat-161 |
| 31     | Phase sequence indicator               | 08/04/129539/83                  | 0-500V      | Ae      | Mat-97  |
| 32     | Polarity Tester                        | TS/03/87                         | 0-30MA      | Sbs     | Mat-66  |
| 33     | Relat test kit (Control unit)          | RT-01/00-19                      | 200A        | Techno  | Mat-32  |
| 34     | Relay test kit (control unit)<br>Timer | RT/01/00-18<br>S.No :2R 2.0/2243 | 200A        | Techno  | Mat-31  |
| 35     | Single phase auto transformer          | Ts/03/VK/04                      | 15A         | Ae      | Mat-74  |
| 36     | Insulation Tester - Analog             | 27183                            | 5000V       | Cie     | Mat-123 |
| 37     | Earth Tester - Analog                  | 9970                             | 0-100OHM\   | Cie     | Mat-15  |
| 38     | Clamp meter - Digital                  | T-08200703                       | 1000A       | Motwane | Mat-90  |
| 39     | Power pack                             | TS/DCS/00-02                     | 0-250V,10A  | Techno  | Mat-126 |
| 40     | Rheostat                               |                                  | 10 Ohms,10A | Ae      | Mat-173 |
| 41     | Rheostat                               |                                  | 10 Ohms,10A | Ae      | Mat-172 |
| 42     | Rheostat (pot)                         | TS-03-Rh-00-01                   | 100 Ohms    | Techno  | Mat-174 |
| 43     | Polarity Tester                        | 0389                             | 0-30MA      | Sbs     | Mat-68  |
| 44     | 1-Pole time interval meter             | NTPL/214/01-02                   | 0-99.99     | Ntpl    | Mat-38  |
| 45     | Clamp meter - Digital                  | 7270181681                       | 1000A       | Mastech | Mat-19  |
| 46     | Clamp meter - Digital                  | T-220105                         | 2000A       | Motwane | Mat-150 |
| 47     | Extn/cum Transformer Test kit          | 00-01/06                         | 415V        | Techno  | Mat-56  |
| 48     | Extn-Cum transformer test kit          | 00-01/13                         | 415V        | Techno  | Mat-53  |
| 49     | Galvano Meter                          |                                  | 0-30MA      | Techno  | Mat-145 |
| 50     | H.V.Excitation test kit                | S/St/00-01                       | 1000V       | Techno  | Mat-143 |

# LIST OF TESTING EQUIPMENT

| Sl. No | Material Name                                     | Serial. No   | Rating     | Make           | Mat. No |
|--------|---|--------------|------------|----------------|---------|
| 51     | Insulation Tester - Analog                        | W0071692     | 500-5000V  | Kyoritsu       | Mat-185 |
| 52     | Leakage Tester                                    | C.57750      | 2,20,200   | Lutron         | Mat-109 |
| 53     | Leakage Tester                                    | ALT-01       | 2,20,200   | Lutron         | Mat-179 |
| 54     | Loading transformer                               | TS/01/03-04  | 1000A      | Sudarsen       | Mat-176 |
| 55     | Millivolt Drop test Kit - Digital                 | MV/TS/03-02  | 75Mv/160a  | Techno         | Mat-14  |
| 56     | Motorised gear arrangement for. hand megger       | -            | -          | Techno         | Mat-123 |
| 57     | Multi meter - Digital                             | 0484941      | Multi      | Rish           | Mat-117 |
| 58     | Polarity Tester                                   | TS/03/86     | 0-30MA     | Sbs            | Mat-65  |
| 59     | Power pack  | TS/DCS/00-01 | 0-250V,10A | Techno         |         |
| 60     | Power pack  | Ts/03/VK/04  | 0-250V,10A | Techno         | Mat-125 |
| 61     | Relay Test kit                                    | TS/03/RT6-01 | 50A        | Techno         | Mat-79  |
| 62     | Relay test kit (control unit)<br>Timer S.No:1034) | RT/01/00-20  | 200A       | Techno         | Mat-51  |
| 63     | Single phase auto transformer                     |              | 15A        | Ae             | Mat-35  |
| 64     | Single phase Auto transformer                     | TS/105       | 15A        | Ae             | Mat-80  |
| 65     | Single Phase Auto Transformer                     | 4/2004       | 15A        | Delcon         | Mat-85  |
| 66     | H.V.Test kit (Transformer unit)                   | 271005       | 0-60KV     | Anantha jyothi | Mat-41  |
|        | H.V.Test kit (Rectifier unit)                     | 271005       | 0-60KV     | Anantha jyothi | Mat-42  |
|        | H.V.Test kit (Control unit)                       | 271005       | 0-60KV     | Anantha jyothi | Mat-40  |
| 67     | Multimeter-Digital                                | M3900        | MULTI      | China          |         |
| 68     | Multi meter - Digital                             | T-30930603   | MULTI      | Motwane        | Mat-89  |
| 69     | Clamp meter - Digital                             | T-08190703   | 1000A      | Mastech        | Mat-84  |
| 70     | Earth Tester                                      | 136032       | 0-100OHM   | Cie            |         |
| 71     | Extn-Cum Transformer Test Kit                     | 00-01/04     | 415V       | Techno         | Mat-54  |
| 72     | H.V Test kit                                      | 0306047      | 0-30KV     | R-Man          | Mat-105 |
|        | H.V Test kit                                      | 0306047      | 0-30KV     | R-Man          | Mat-106 |
|        | H.V Test kit                                      | 0306047      | 0-30KV     | R-Man          | Mat-107 |
|        | H.V Test kit                                      | 0306047      | 0-30KV     | R-Man          | Mat-108 |
| 73     | H.V.Excitation Test<br>Transformer Knee Point)    | -            | 1000V      | echno          | Mat-62  |
| 74     | Insulation tester-Analog                          | 29309        | 1000V      | Cie            |         |
| 75     | Loading Transformer                               | 21110        | 2000A      | AE             | Mat-29  |

# LIST OF TESTING EQUIPMENT

| Sl. No | Material Name  | Serial. No     | Rating             | Make      | Mat. No |
|--------|--|----------------|--------------------|-----------|---------|
| 76     | Loading Transformer                                  | TS/542/VS      | 2000A              | AE        | Mat-30  |
| 77     | Micro ohms meter                                     | 030813         | 0-1999 Ohm         | Agronic   | Mat-79  |
| 78     | Multi meter - Digital                                | 193006         | MULTI              | motwane   |         |
| 79     | Multimeter-Digital                                   | T-423706       | MULTI              | Motwane   |         |
| 80     | Phase Sequence                                       | 02/03/05/RU    | 0-500V             | AE        | Mat-63  |
| 81     | Phase Shifting Transformer                           | 6-2K           | 0-500V             | AE        | Mat-61  |
| 82     | Polarity Tester                                      |                | 0-30MA             | Techno    | Mat-143 |
| 83     | Polarity Tester                                      | TS/03/PT/00-03 | 0-30MA             | Techno    | Mat-71  |
| 84     | Relay Test Kit<br>(Timer S.No:0312V01-868)           | TS/03/R/T6-02  | 50A                | Techno    | Mat-77  |
| 85     | Single Phase Auto Transformer                        | TS/742/VS      | 15A                | AE        | Mat-35  |
| 86     | 1-Pole time interval meter                           | 2K11/2409      | 4 Digits           | Selectron |         |
| 87     | Clamp meter - Digital                                | 3107           | 200A               | Hioki     | Mat-18  |
| 88     | Clamp meter - Digital                                | T-280005       | 1000A              | Motwane   | Mat-131 |
| 89     | Insulation Tester - Analog                           | 963094         | 500V               | Waco      | Mat-06  |
| 90     | Insulation Tester - Analog<br>(Battery cum power op) | 15440105       | 2500/5000V<br>B50K | Motwane   |         |
| 91     | Phase sequence Indicator                             | 049            | 0-500V             | cie       | Mat-170 |
| 92     | Relay Test kit<br>(Timer S.No:061V12-2140)           | RT-05          | 200A               | Ae        | mat-48  |
| 93     | Polarity tester                                      | 0388           | 0-30MA             | Sbs       | mat-67  |
| 94     | Power pack   | TS/0305/RU     | 0-250V,10A         | Techno    | Mat-60  |
| 95     | 3-Pole Time interval Meter                           | 3PTIM/00-01    | 0.0001-9999sec     | Techno    | Mat-102 |
| 96     | Clamp meter - Digital                                | T-43890305     | 1000A              | Motwane   | Mat-128 |
| 97     | Galvano meter  | TS/06/90       | 0-30MA             | Jaysee    | Mat-184 |
| 98     | Insulation Tester - Analog                           | 25296          | 1000V              | Cie       | Mat-103 |
| 99     | Insulation Tester - Analog                           | 21375          | 5000V              | Cie       | Mat-02  |
| 100    | Leakage Tester                                       | C-54022        | 2,20,200           | Lutron    | Mat-100 |

# LIST OF SPECIAL EQUIPMENT

| Sl. No | Electrical Instruments                           | Make    | Range      | Qty |
|--------|--|---------|------------|-----|
| 1.     | 3 Phase relay Test Kit                           | Omicron | CMC-356    | 3   |
| 2.     | Fully Automatic Capacitance & Tan Delta Test Kit | Eltel   | ACTS -12 K | 2   |
| 3.     | Transformer Winding Resistance Meter             | Scope   | TRM – 10   | 1   |
| 4.     | Transformer Winding Resistance Meter             | Motwane | LR-2065    | 1   |
| 5.     | Contact Resistance Meter                         | Scope   | CRM -100   | 2   |
| 6.     | Transformer Turns Ratio Meter                    | Eltel   | TRM – 200  | 1   |
| 7.     | Frequency Generator                              | Amber   | -          | 2   |

| Sl. No | Instrumentation Equipment | Make   | Range                    | Qty |
|--------|---------------------------|--------|--------------------------|-----|
| 1.     | Dead Weight Tester        | Nagman | H3000 – DT – 160-2 (SPL) | 1   |
| 2.     | Temperature Calibrator    | Nagman | MTC – 350                | 1   |
| 3.     | Pressure Calibrator       | Nagman | MPC- 350                 | 1   |
| 4.     | Transducers Calibrator    | Nagman | TTC-370                  | 1   |

# LIST OF CONTRACTS EXECUTED

| SL. No | CLIENT NAME               | SCOPE OF WORK   | ROLE IN PROJECT | YEAR OF COMPLETION |
|--------|---------------------------|---|-----------------|--------------------|
| 1      | Jindal Steel & Power Ltd. | Miscellaneous Job   | Sub Contractor  | 2007-2008          |
| 2      | Jindal Steel & Power Ltd. | Grass cutting at CPP Switch Yard  | Sub Contractor  | 2007-2008          |
| 3      | Jindal Steel & Power Ltd. | Maintenance of Construction Power Supply System and Other Electrical services at 4x250MW RTPP Projects. | Sub Contractor  | 2005-2007          |
| 4      | Jindal Steel & Power Ltd. | General Electrical Work   | Sub Contractor  | 2007               |
| 5      | Jindal Steel & Power Ltd. | General Electrical Work   | Sub Contractor  | 2007               |
| 6      | Jindal Steel & Power Ltd. | Rack Fabrication For Store  | Sub Contractor  | 2007               |
| 7      | Jindal Steel & Power Ltd. | Electrical Jobs for New 25MW Chinese TG   | Sub Contractor  | 2007-2008          |
| 8      | Bhusan Steels.            | Erection of Plant Area Lighting Pole at Angul,Orissa  | Sub Contractor  | 2007               |
| 9      | Intergulf.                | Erection of Lighting Panels and Building wiring at Mussafah in Abudhabi,UAE                             | Sub Contractor  | 2007               |
| 10     | Jindal Steel & Power Ltd. | Cont-Erection & Commissioning of Capacitor Bank   | Sub Contractor  | 2006               |
| 11     | Larsen & Toubro Ltd.      | Erection of HT Panels & Earthing of Plant Area at Hindustan Zinc, Rajasthan                             | Sub Contractor  | 2006               |
| 12     | Cegelec.                  | Quality Control works for ABB at Mussafah in Abu Dhabi,UAE  | Sub Contractor  | 2005               |
| 13     | VATECH / Danway           | 132 KV Modification Projects (At Sports Centre 1 & 2,Sharja Sharja Electricity & Water Authority (SEWA) | Sub Contractor  | 2005               |

## PHOTOS OF CONTRACTS EXECUTED



Quality Control works for ABB at Mussafah in Abu Dhabi, UAE at Contract No.A65.6001/OH1/rs



Electrical Jobs for New 25MW Chinese TG at JSPL Raigarh Contract No.4778001677



# PHOTOS OF CONTRACTS EXECUTED



General Electrical Works at JSPL Raigarh Contract No.4778000877



Central Electrical Work at JSPL Raigarh Contract No.4778001057

# TECHNOSYS

## **Technosys Engineers and Consultants (Chennai) Pvt. Ltd**

New no.8, Old No.4, R.K.S Flats  
14 th Street, Nanganallur, Chennai – 600061  
Tel:044-22316813  
Fax:044-22316729  
Email : [info@technosysec.com](mailto:info@technosysec.com)

## **De Technosys Electromechanical LLC**

P.O Box No-122597,Office No.19  
7 th Floor , Falcon Daisytech computer Building  
Opp to Hi-land Hotel, Bur Dubai, Dubai  
Mobile: +971 050 9076980  
Email : [detechnosys@technosysec.com](mailto:detechnosys@technosysec.com)

## **Technosys Engineers and Consultants (Chennai) Pvt .Ltd**

C/O.PANDEY  
Bade Rampur Road  
Grahmin Bank Colony  
Raigarh—496001,Chattisgarh.  
Contact Person : Mr.Syamal Biswas  
Mobile : 09755636246,09827922346,09755637397  
Fax : 07762 232943  
Email: [technosysraigarh@rediffmail.com](mailto:technosysraigarh@rediffmail.com)

Every care has been taken to ensure that all information present here is accurate and up to date.However,information are approximate and no responsibility is assumed for any error, omission or misunderstanding in these particulars , which do not constitute an offer or contract. If no event shall Technosys Engineers and Consultants (Chennai) Pvt.Ltd or any of its stakeholders be liable for any special,direct,indirect or consequential damages or any damages whatsoever resulting from loss of use, data or profits, whether in an action of contract, negligence or any other action, arising out of or in connection with the use or performance of this information. no representation or warranty whatever is made or given either during negotiation, in particulars or elsewhere.

For more details Log on to [www.technosysec.com](http://www.technosysec.com) or E-mail as at [vpurushothaman@technosysec.com](mailto:vpurushothaman@technosysec.com)

No part of any material in this catalog may be reproduced, stored in a retrieval system, or transmitted in any form or by means,electronic, mechanical,photocopying or otherwise, except as expressly authorized by **Technosys engineers and Consultants (Chennai) Pvt.Ltd.**